

# State of Wyoming Corner Record

(In compliance with the **CORNER PERPETUATION AND FILING ACT**, Wyoming Statutes, 1977 Section 36-11-101, et. seq., and the Rules and Regulations of the Board of Professional Engineers and Professional Land Surveyors)

Reverse side of this form may be used if more space is needed.

Record of original survey and citation of source of historical information (if corner is lost or obliterated). Description of corner monumentation evidence found and/or monument and accessories established to perpetuate the location of this corner. Sketch of relative location of monument, accessories, and reference points with course and distance to adjacent corner(s) (if determined in this survey). Method and rationale for reestablishment of lost or obliterated corner.

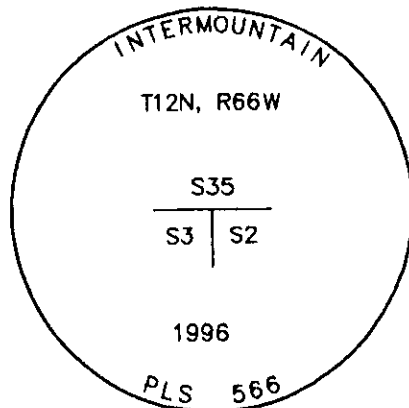
FOUND: Nothing found. Corner set by single proportion from S 34|35 + S 35|36

## Monument Inscription

GLO RECORD: Boulder 18"x 16"x 10" closing corner.

SET: 3" Alum. pipe monument LS 566, PK nail w/washer,, 566 in fence posts.

REFERENCES: PK Nail with washer, L.S. 566 set on top of fence posts.

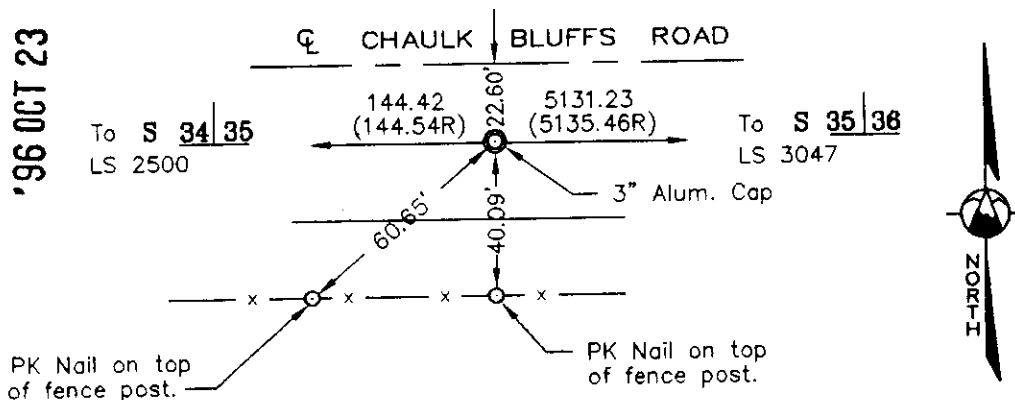


192098

LARAMIE COUNTY CLERK  
CHEYENNE, WY.

'96 OCT 23 AM 9 35

## Reference Locations



Date of Field Work: 8/21/96

Office Reference: 2831

## Cross Index Plat

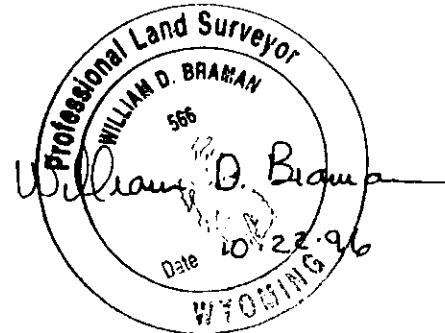
	1	2	3	4	5	6	7	8	9	10	11	12	13	14	15	16	17	18	19	20	21	22	23	24	25
A																									
B																									
C		6																							
D			5																						
E				4																					
F					3																				
G						2																			
H							1																		
I																									
J																									
K																									
L																									
M																									
N																									
O																									
P																									
Q																									
R																									
S																									
T																									
U																									
V																									
W																									
X																									
Y																									
Z																									

Firm/Agency, Address

INTERMOUNTAIN PROFESSIONAL SERVICES, INC.  
5801 OSAGE AVENUE  
CHEYENNE, WYOMING 82009  
Ph: (307) 632-3138  
Fax: (307) 632-3194

This corner record was prepared by me or under my direction and supervision.

SEAL & SIGNATURE



35

Corner Name Closing Corner 3 | 2 , T 12 N, R 66 W, 6th P.M.  
BOOK 1436 County: Laramie, Wyoming

Cross-Index No.: A-17

0141

